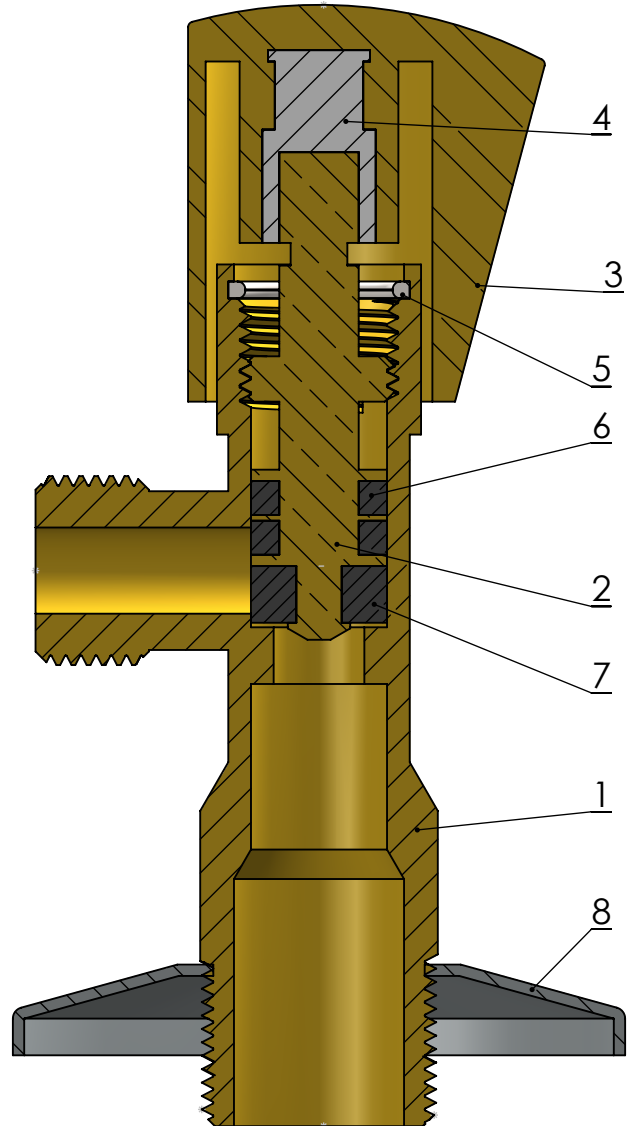
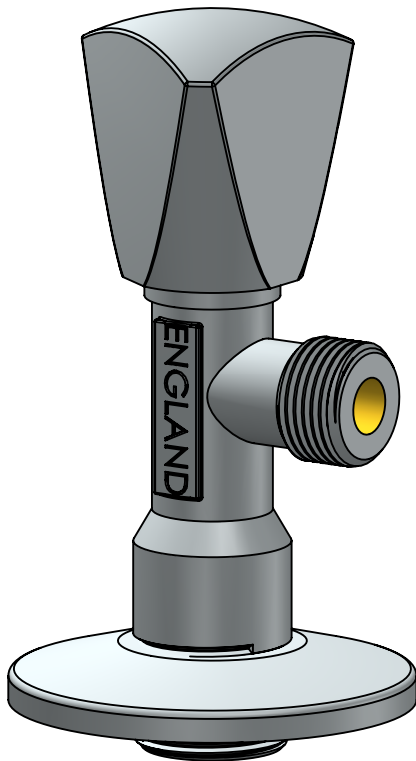


# Technical Data Sheet

Range Angle Valve  
Code AV103.1  
Description Angle Valves CP



Number	Component	Material
1	Body	CW617N
2	Spindle	CW614N
3	Handle	CW617N
4	Indice	Polypropylene
5	Thrust Washer	Stainless Steel
6	O Ring	Nitrile (Acrylonitrile Butadiene) components N8118F Black coloured compression moulded 'O' ring and gaskets. Shore hardness between 50&90. Tested in radii sizes between 0.3mm&3.5mm. For use with water up to 85°C
7	O Ring	Nitrile (Acrylonitrile Butadiene) components N7118F Black coloured compression moulded 'O' ring and gaskets. Shore hardness between 50&90. Tested in radii sizes between 0.3mm&3.5mm. For use with water up to 85°C
8	Rosette	Chrome plate Steel